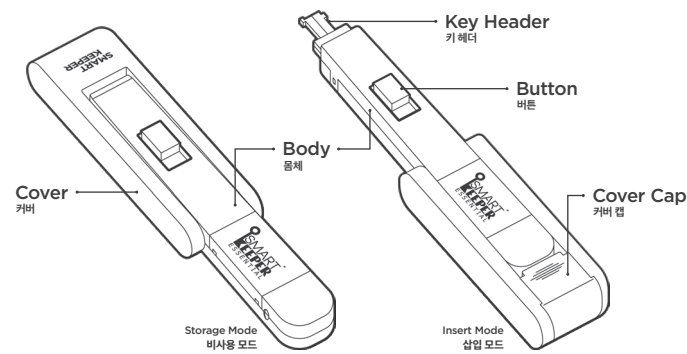


# SMARTKEEPER ESSENTIAL Line-up

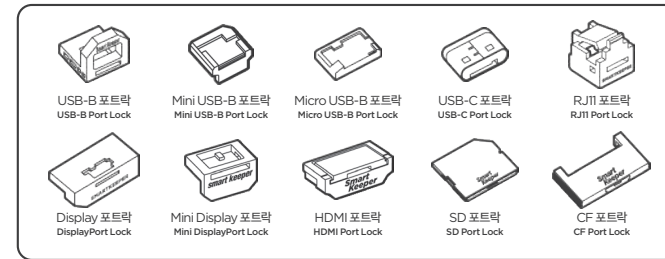
<b>Lock Key Basic Line-up</b> 베이직 키 전용 라인업	<b>Lock Key Mini Line-up</b> 미니용 키 전용 라인업
<ul style="list-style-type: none"> <li>USB Port Lock</li> <li>USB Cable Lock</li> <li>Keyboard/Mouse Lock</li> <li>Lockable Flash Drive</li> <li>Smart Data Blocker</li> <li>RJ45 Port Lock</li> <li>LAN Cable Lock 2</li> <li>Secure LAN Cable Coupler</li> <li>Network Module Lock 4/8/12P</li> <li>Serial Port Lock</li> <li>DVI Port Lock</li> <li>Parallel Port Lock</li> </ul>	<ul style="list-style-type: none"> <li>USB-B 포트락</li> <li>USB 케이블락</li> <li>키보드/마우스 락</li> <li>USB 메모리락</li> <li>USB 송전철탄락</li> <li>랜포트락</li> <li>랜케이블락 2</li> <li>랜케이블 보안 커블러</li> <li>네트워크 모듈락 4/8/12P</li> <li>시리얼 포트락</li> <li>DVI 포트락</li> <li>패러렐 포트락</li> </ul>
<b>No Key Required</b> 키 불필요 제품	<b>All in One Security Pack</b> 올인원 물리보안 팩
<ul style="list-style-type: none"> <li>USB Closing Lock</li> <li>LAN Cable Grip</li> <li>Power Cord Lock</li> <li>Power Extension Cord Lock</li> <li>PC Lock (Combination)</li> <li>Laptop Lock (Combination)</li> <li>Laptop Lock Plus (Combination)</li> <li>SMARTKEEPER Multi Hub</li> <li>Laptop DOCK &amp; LOCK</li> <li>Mouse Holder</li> <li>RJ45 Dust Cover</li> </ul>	<ul style="list-style-type: none"> <li>USB-B 포트락</li> <li>Mini USB-B 포트락</li> <li>Micro USB-B 포트락</li> <li>USB-C 포트락</li> <li>RJ11 포트락</li> <li>Display 포트락</li> <li>Mini Display 포트락</li> <li>HDMI 포트락</li> <li>SD 포트락</li> <li>CF 포트락</li> </ul>
<b>Lock Key</b> 락키	
<ul style="list-style-type: none"> <li>Lock Key Basic</li> <li>Lock Key Mini</li> </ul>	<ul style="list-style-type: none"> <li>베이직 키</li> <li>미니용 키</li> </ul>

www.smartkeeperessential.kr  
Made in Korea

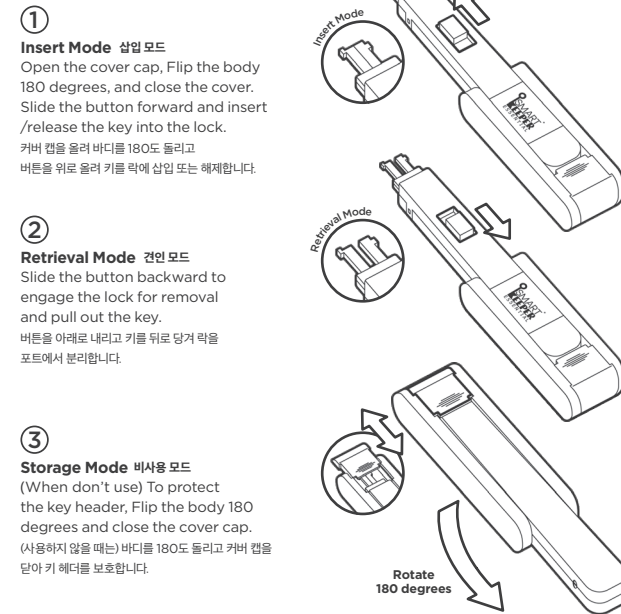
## Lock Key Mini 미니용 키



### Compatible Products with Lock Key Mini 미니용 키 전용 제품



## How to use the Lock Key Mini 베이직 키 사용 방법

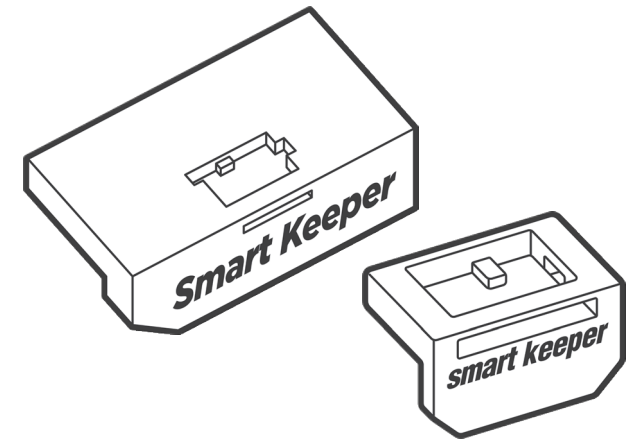


**Precautions · 주의사항**

- Make sure the key is carefully and fully engaged before removing port lock.
- For small products, installation by key is preferred.
- The key and locks are matched by color.
- 키는 삽입 방향이 있습니다. 방향에 유의하여 끝까지 삽입해주세요.
- 일부 제품은 키에 포트락을 찾아 설치하는 것이 더 편리할 수 있습니다.
- 락 제품 해제시에는 동일한 색상의 키가 필요합니다.

# Display | Mini Display Port Lock User Guide

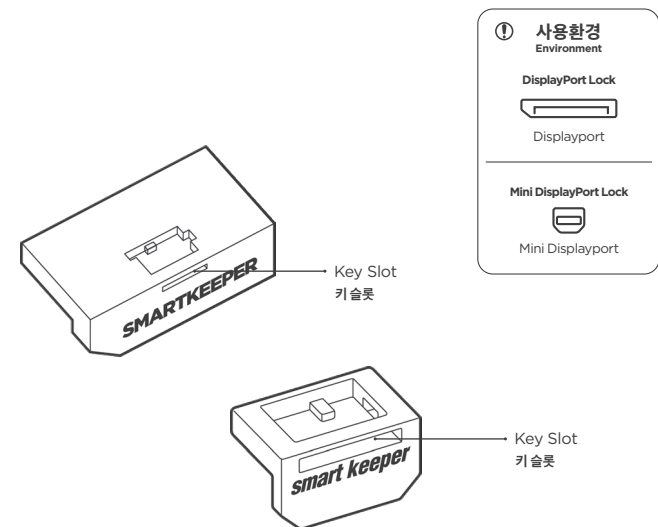
Display | Mini Display 포트락 사용 설명서



SMARTKEEPER ESSENTIAL

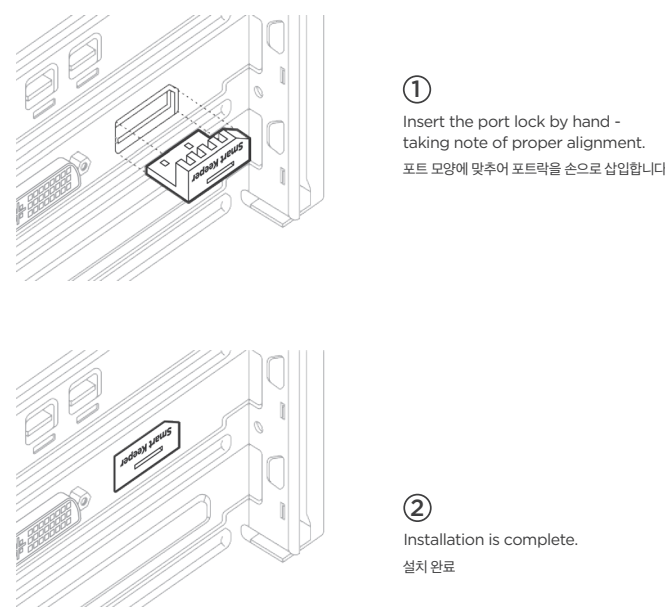
## Display | Mini DisplayPort Lock

This is physical cybersecurity device that prevents unauthorized connection to an unused Display | Mini Display port.  
사용하지 않는 Display | Mini Display 포트를 물리적으로 차단하여 비인가된 기기의 접속을 방지하는 물리보안 제품.



Specification	
Display 포트락 DisplayPort Lock	Width x Height x Length(Depth) : 16 x 4.7 x 8.6mm (0.63 x 0.19 x 0.34in) Weight : 0.3g (0.01oz)
Mini Display 포트락 Mini DisplayPort Lock	Width x Height x Length(Depth) : 7.4 x 4.4 x 5.0mm (0.29 x 0.17 x 0.2in) Weight : 0.1g (0.01oz)

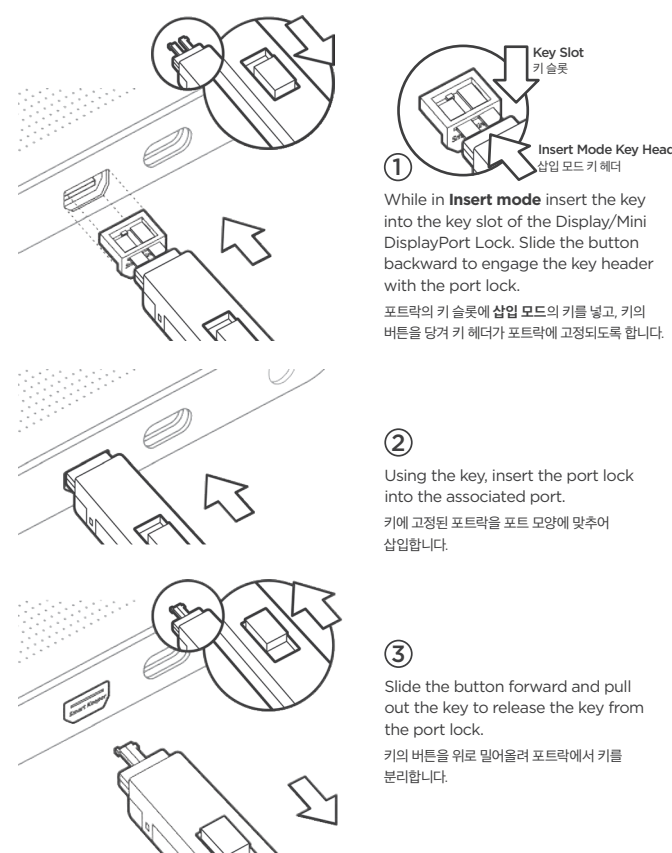
## Installation A - by Hand 설치 방법 A - 손으로



**Please Note**

- The Display | Mini DisplayPort locks are designed to work with ports that follow industry standards. Some products in the marketplace may have ports that do not follow industry standards perfectly. If a port lock is hard to insert, forcing it may cause damage to the port.
- Display 포트락 | Mini Display 포트락은 표준 규격에 따라 제작되지만, 간혹 제조사별로 해당 포트의 규격이 표준보다 작을 수 있습니다. 포트락이 삽입되지 않는 경우, 억지로 삽입하지 마십시오. 포트 파손의 원인이 될 수 있습니다.

## Installation B - by Key 설치 방법 B - 키를 이용하여 삽입



## Uninstall (Removal) 해제 방법

